



iBook

iBook, iBook (FireWire)

Updated December 5, 2002



Take Apart

iBook / iBook (FireWire)



Tools

Use the following tools for procedures in this chapter:

- Coin the size of a U.S. quarter (to remove battery door)
- 5 mm nut driver
- 4 mm nut driver (to remove sound board on iBook)
- Torx T8 screwdriver
- #0 Phillips screwdriver (for optical drive bezel screws)
- #1 Phillips screwdriver
- Very small jeweler's flat-head screwdriver (for keyboard locking screw)
- Flat-blade tool, ESD-safe, non-marring (such as the nylon probe tool 922-5065)
- IC extractor (to remove display cable connector)
- Fine point needle nose pliers (to adjust handle tension)



Cables

Follow these guidelines when working with cables:

- Ensure that all cables are routed exactly as they were found when reassembling. Use all grooves and/or protrusions to align cabling. If the cable is improperly routed, you may not be able to reassemble the computer, or once reassembled, the computer may fail to function.
- Check that all cables are properly aligned in the connectors and that the connections are tight.
- Handle flex cables carefully. Using excessive force to disconnect a cable can tear or damage it so it will not work properly.
- Use a nylon tool or dental pick to help loosen cable connections.



Battery

Before you begin, unplug the AC adapter.

1. Use a coin to turn the battery door screws to the left a quarter turn. The screws will pop up but not come out all the way.
2. Remove the battery door and pull up on the plastic tab attached to the battery to remove it from the compartment.



CD-ROM Bezel

Before you begin, remove the following:

- AC adapter
- Battery

1. Turn the computer over and press the manual disc eject button to eject the CD tray.
2. Use a #0 Phillips screwdriver to remove the small screw on the CD tray near the center of the bezel.
3. Carefully rotate the bezel as shown, to remove.



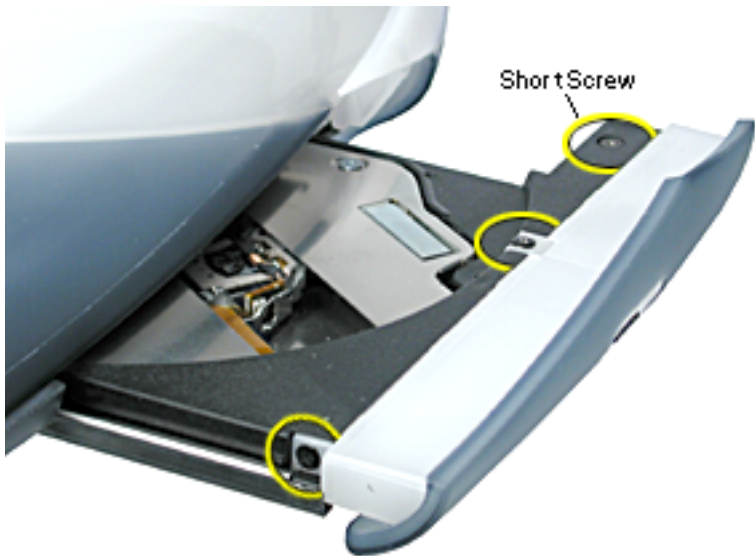
DVD-ROM Bezel

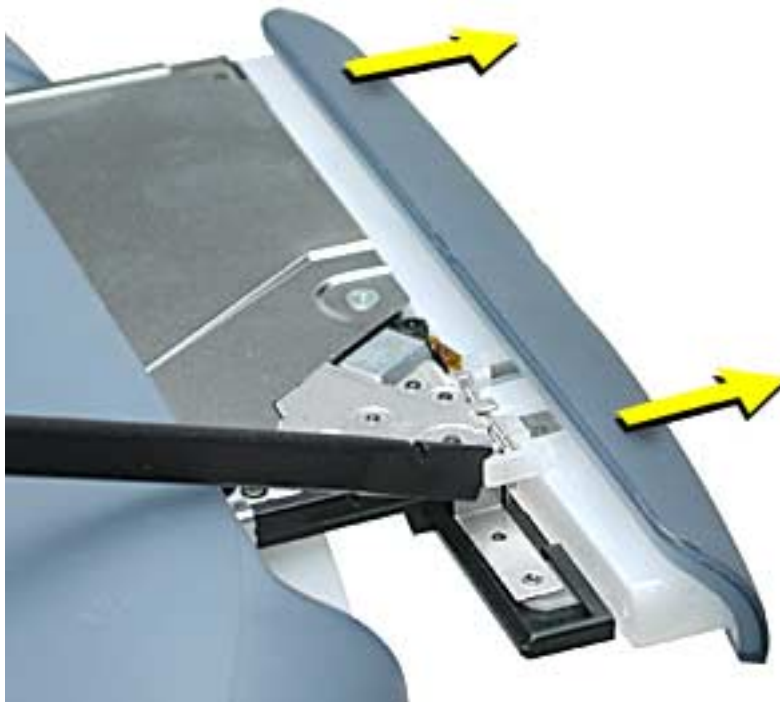
Before you begin, remove the following:

- AC adapter
- Battery

1. Press the manual disc eject button to eject the DVD tray.
2. Use a #0 Phillips screwdriver to remove the three small screws shown here.

Replacement Note: The screw holes strip easily. Gently tighten the screws. Do not overtighten.





3. Turn the computer over.
4. With a non-marring flat-blade tool, carefully push where shown to release the tab catch.
5. Carefully pull the bezel straight off to remove.



Keyboard and AirPort Card

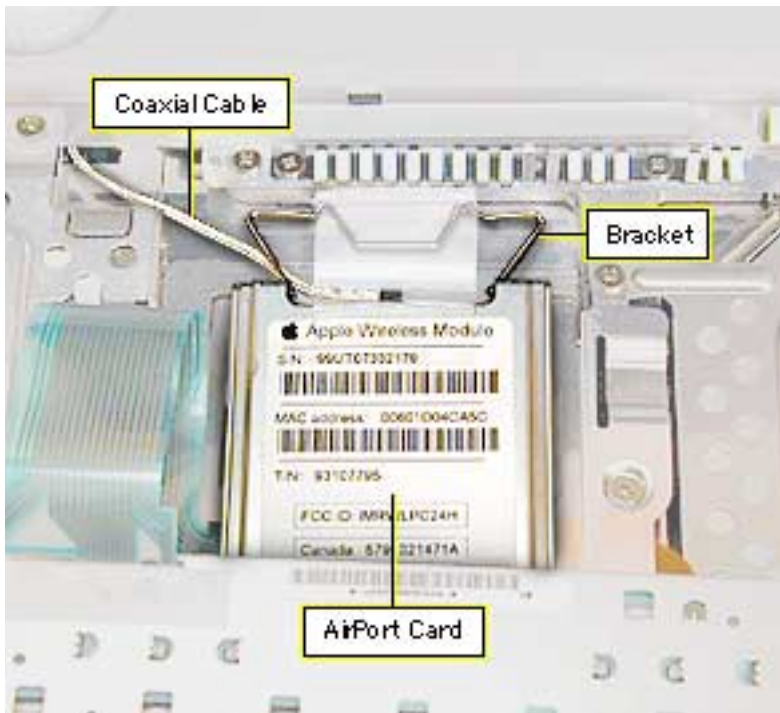
Before you begin, remove the following:

- AC adapter
- Battery

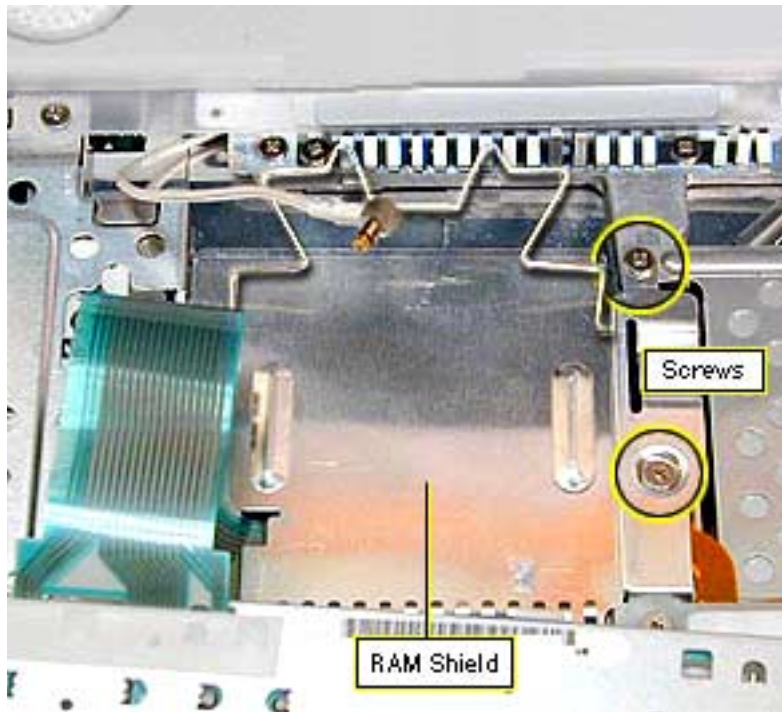
1. Place a cloth on the palmrest to protect it from scratches.
2. Locate the two keyboard release tabs on the keyboard to the left of the F1 and F9 keys, and slide them toward you.



3. If the keyboard does not pop up, it may be locked. Locate the keyboard lock screw (left of the num lock key). Turn the lock a half turn in either direction until the tab slides out from under the top case.
4. When the keyboard pops up, move it slightly toward the display to release the tabs in the front.
5. Flip the keyboard over and lay it on top of the palmrest.



- 6 Flip up the wire bracket, and remove the installed AirPort Card from its connector. Disconnect the AirPort antenna coaxial cable.



7. Remove the two Phillips screws on the right side of the RAM shield.
8. Pull up on the shield and remove it.
9. Pull up on the keyboard cable connector loop to disconnect the keyboard from the logic board.



Memory Card (RAM)

Before you begin, remove the following:

- AC adapter
- Battery
- AirPort Card
- RAM shield (see Keyboard and AirPort Card Take Apart procedure)

1. If a memory card is in the memory slot under the RAM shield, carefully spread the brackets apart on each side of the memory card until the card releases.





2. Pull the memory card up and out of the memory slot.
3. To install the new memory card, line up the notch in the card with the small tab in the memory slot. Hold the card at a 30-degree angle and then push the card into the slot until it is firmly seated.
4. Then, gently push the card down until the two brackets on either side of the card lock into place.



Screws

Top Case

Before you begin, remove the following:

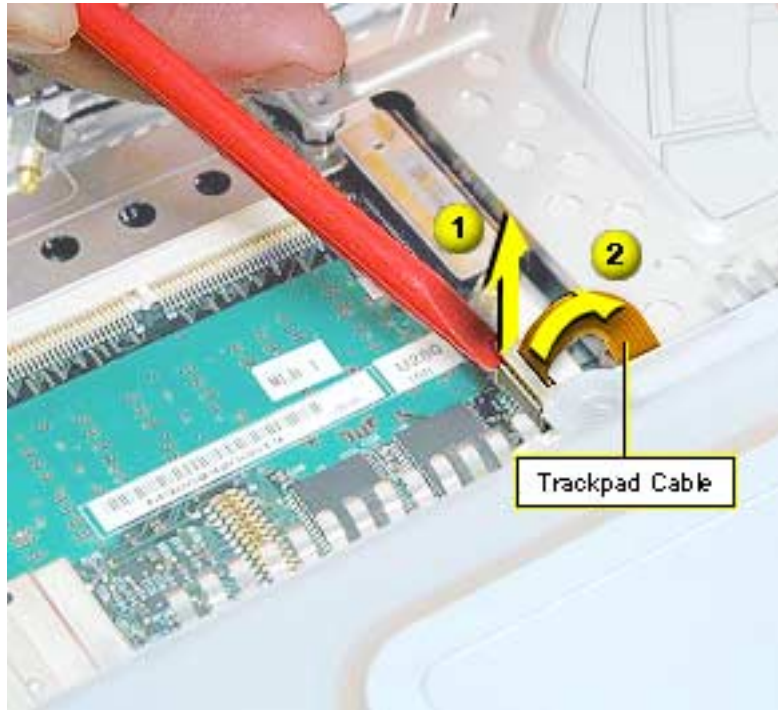
- AC adapter
- Battery
- Keyboard

Note: Use a clean padded work surface.

1. Close the display and turn the computer upside down.
2. Remove the two long T8 screws near the handle.
3. Remove the four shorter T8 screws in the battery compartment.



4. Press the manual disc eject button with the tip of a jeweler's screwdriver or paper clip to eject the optical drive tray.
5. Remove the small Phillips screw in the top of the drive compartment.



6. Leave the optical drive tray partly open and turn the computer right-side up and open the display.
7. **Important:** The side brackets are extremely fragile. Do not move them or place pressure on them while prying up the top of the trackpad connector. Use extreme care.

Use an ESD-safe flat-blade tool (using a fingernail might also work) to carefully pry up the top of the



9. With the optical drive tray open, push up on the underside of the top case while pushing out on the clear lip that holds the back right edge of the top case until the case pops open.
10. Work your fingers along the back seam and press out on the clear lip at the left edge until the top case pops open.



11. At the front left corner, push in on the bottom front while pulling up on the top case.

12. Repeat this process at the front, right corner.

Important: Do not remove the top case yet since the speaker wire is still connected to it.